

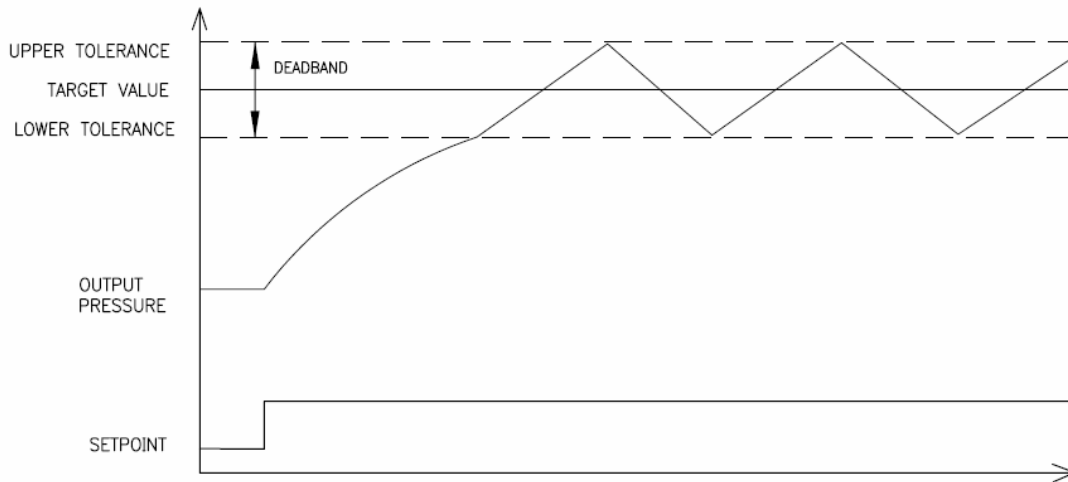
3. Sensitivity Adjustment Function

3 levels of sensitivity adjustment are available. Table 2 shows the relationship between ITV LED and the sensitivity level. If the output pressure is extremely hunching, the sensitivity level can be adjusted to the more dull level to suppress the hunching. When \triangle key is pushed, the sensitivity level changes from the current sensitivity level to the more dull level. When ∇ key is pushed, the sensitivity level changes from the current sensitivity level to the more sensitive level. The sensitivity level at the time of pushing the SET key is stored. If the power turns off without pushing the SET key, the sensitivity level is not stored.

For the detailed setup procedures, please refer to 4 on the later page.

Default is set up for the best sensitive level (S.L.0).

Sensitivity	Good	←————→	Dull
LED	S.L.0	S.L.1	S.L.2



UPPER AND LOWER TOLERANCES ARE SET BY
SL PROGRAMMING PARAMETERS

SL0 = ± 0.2% (FACTORY DEFAULT)

SL1 = ± 0.4%

SL2 = ± 0.6%

NO CONTROL WITHIN TOLERANCE DEADBAND

4. Gain Adjustment, Sensitivity Adjustment Setup Procedures

For manual adjustment of the gain and the sensitivity, follow the procedure below.

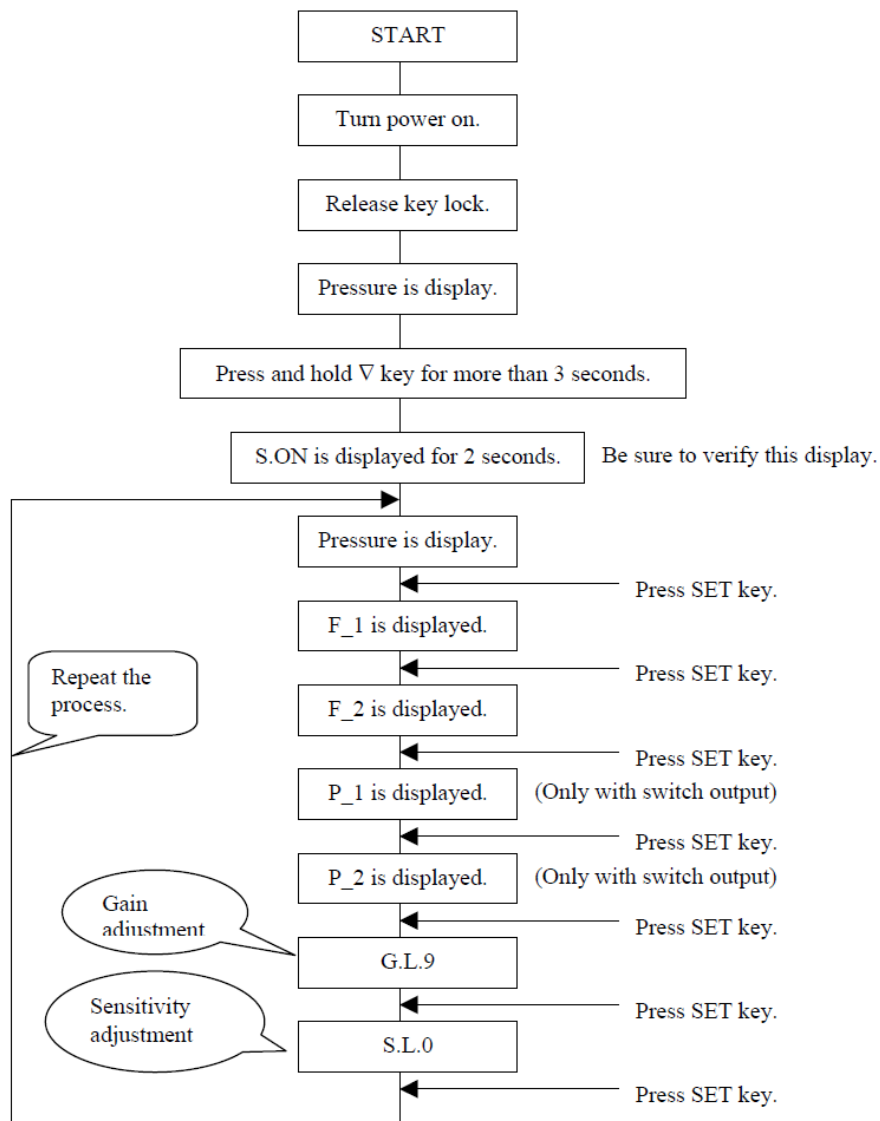


Fig. 2. Manual Setup Mode Procedures

(Note 1) Analog output type does not have P_1 and P_2 commands.

(Note 2) For preset input type, after pressure is displayed, G.L.9 and S.L.0 commands will appear after P_1, P_2, P_3 and P_4 (each preset memory setup) are displayed.

(Note 3) After setup, be sure to lock the key.